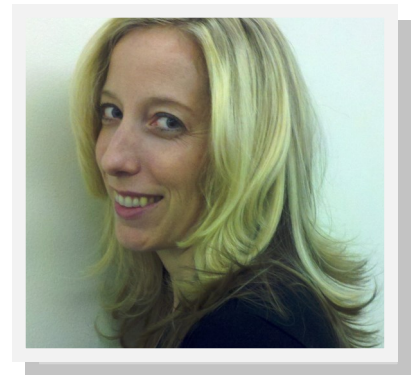
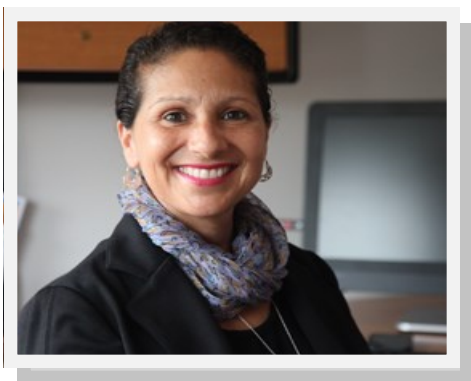


Brazil Syndemic Partnership: Groundwork for Transnational Research



The J. Keith Behner and Catherine M. Stiefel program on Brazil, in collaboration with the Global Health Program and the School of Social Work, invites you to a lunch and discussion on doing research on Brazil. The discussion will be led by SDSU's Professors Dr. María Luisa Zúñiga, School of Social Work, and Dr. Susan Kiene, Graduate School of Public Health. Drs. Zúñiga and Kiene will discuss what it takes to build a new global health partnerships and considerations for establishing research studies in international settings, including designing informative research, IRB and ethical considerations, and team communication.

Date: Monday, October 31st, 2016

Time: 11:30am

Location: Finch Conference Room, Arts and Letter 600

Please RSVP to Gabriela Bortoluzzi at gbortoluzzi@mail.sdsu.edu